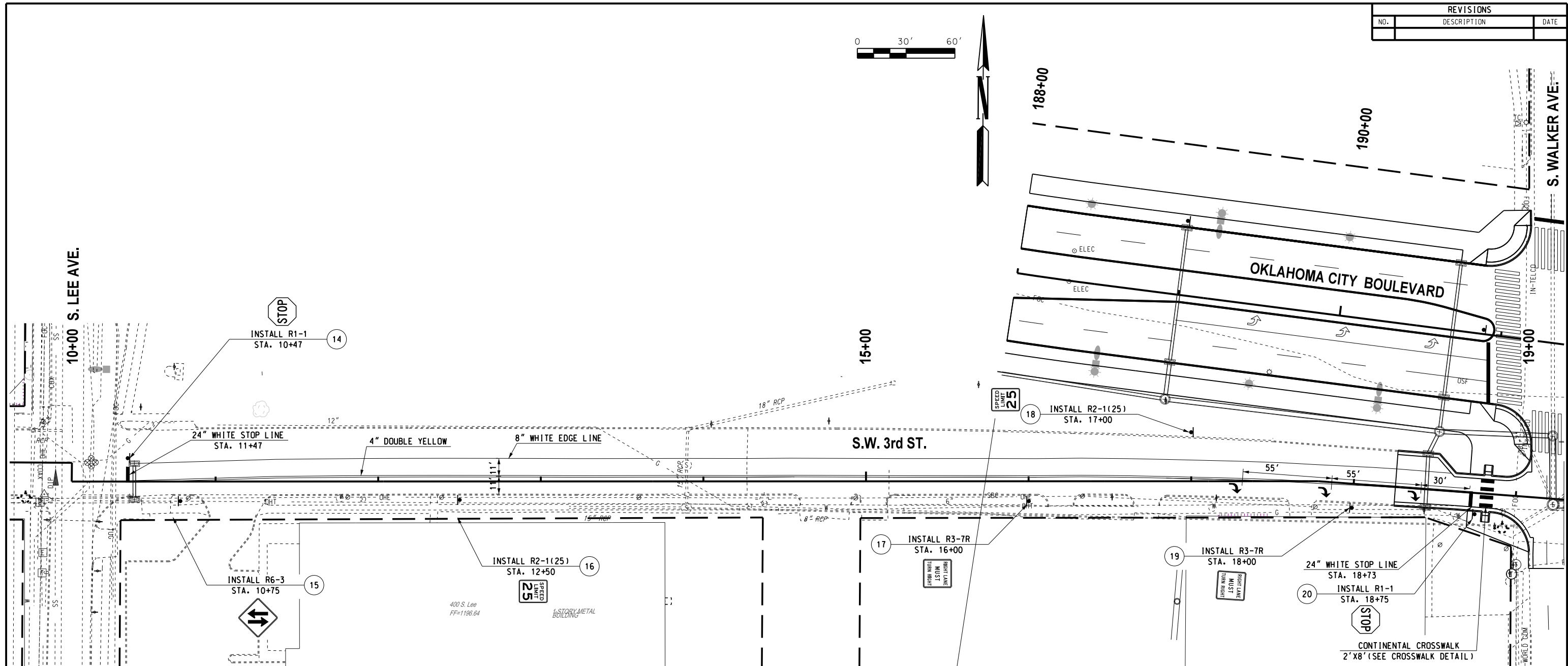
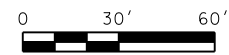


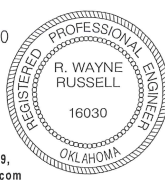
REVISIONS		
NO.	DESCRIPTION	DATE



**MULTI. POLY. STRIPING SUM. TABLE**

DESCRIPTION	UNIT	TOTALS
TRAFFIC STRIPE (MULTI. POLY.) 4" WHITE	L.F.	0
TRAFFIC STRIPE (MULTI. POLY.) 4" YELLOW	L.F.	1700
TRAFFIC STRIPE (MULTI. POLY.) 6" WHITE	L.F.	0
TRAFFIC STRIPE (MULTI. POLY.) 6" YELLOW	L.F.	0
TRAFFIC STRIPE (MULTI. POLY.) 6" BLACK	L.F.	0
TRAFFIC STRIPE (MULTI. POLY.) 8" WHITE	L.F.	815
TRAFFIC STRIPE (MULTI. POLY.) 8" YELLOW	L.F.	0
TRAFFIC STRIPE (MULTI. POLY.) 12" WHITE	L.F.	0
TRAFFIC STRIPE (MULTI. POLY.) 12" YELLOW	L.F.	0
TRAFFIC STRIPE (MULTI. POLY.) 24" WHITE	L.F.	120
TRAFFIC STRIPE (MULTI. POLY.) ARROWS	EA.	3
TRAFFIC STRIPE (MULTI. POLY.) WORDS	EA.	0
TRAFFIC STRIPE (MULTI. POLY.) SYMBOLS	EA.	0

*R. Wayne Russell*  
 R. WAYNE RUSSELL, P.E. # 16030  
 C.A. # 1160, RENEWAL 06-30-17



11-13-15  
 DATE

Traffic Engineering Consultants, Inc.  
 6000 S. Western, Suite 300 - Oklahoma City, OK 73139,  
 Ph: 405-720-7721, Fax: 405-720-9848, Web: www.tecok.com

Design	RWR	11-13-15
Drawn	SB	11-13-15



**SIGNING & STRIPING PLAN**  
**S.W. 3rd STREET**

State Job No. 17428(89) Sheet No. 114

11-13-15 G:\0\Projects\11-24\17B Downtown Blvd WP 51C Task 6\CAD\STRIPING 3r.dgn